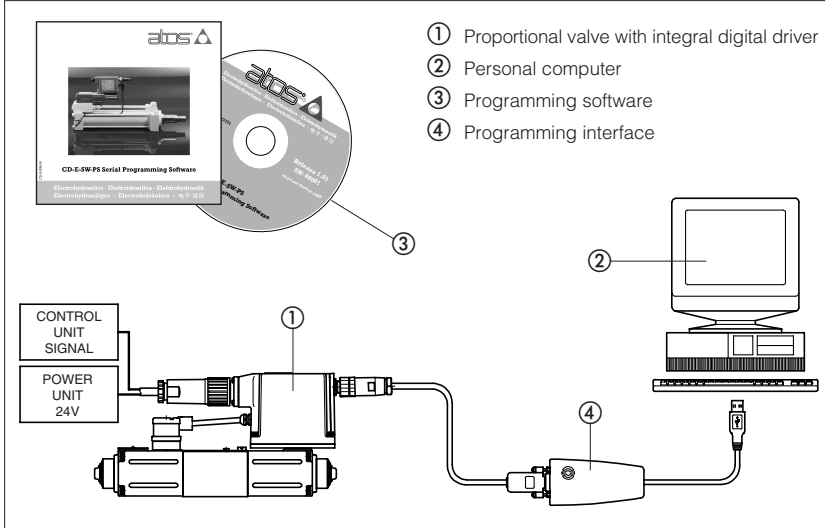


Programming devices

for digital proportional valves



1 PROGRAMMING KITS (FIRST SUPPLY) - see section 6

KIT-E-SW-**

- PS** = programming device for serial communication interface
- PS-TERS** = light version of PS (only for -TERS-PS pressure valve)
- PS-TERS/U** = as PS-TERS with serial to USB interface
- BC** = programming device for CAN-bus protocol
- BP** = programming device for PROFIBUS DP protocol
- IR** = light programming device for infrared communication protocol (only for E-MI-AS-IR driver - see table G020)

**

Series number

2 SOFTWARE PACKS (FOLLOWING SUPPLIES) - see section 7 (1)

DVD-E-SW-**

- PS-TERS** = software, manuals and licence for light serial programming
- PS** = software, manuals and licence for serial programming
- BC** = software, manuals and licence for CAN-bus programming
- BP** = software, manuals and licence for PROFIBUS programming
- IR** = software, manuals and licence for infrared light programming

**

Series number

3 COMMUNICATION INTERFACES (FOLLOWING SUPPLIES) - see section 9 (1)

E-C-PC-**

- PS** = for serial communication
- BC** = for CAN-bus communication
- BP** = for PROFIBUS DP communication
- IR** = for infrared communication

- RS232** = serial communication (only for **PS**)
- USB** = with USB interface

-

**

**

Series number

4 VALVE'S PROGRAMMING MANUALS (FIRST SUPPLY) - see section 8 (2)

DVD-E-MAN-**

- BC** = CAN-bus programming manual
- BP** = PROFIBUS DP programming manual

**

Series number

Notes (1): These products are available only for repetitive purchases following the first supply of KIT-E-SW-*
 (2): Standard fieldbus specifications not included

The programming KIT-E-SW-** represent the entry door to the Atos digital electronics.

They include the PC programming software, the USB communication interface and the user manuals to allow a simply PC setting of the functional parameters of Atos digital proportional valves. These programming kits are available with the relevant communication interfaces for Atos digital drivers: serial RS232 (PS), CANopen (BC), PROFIBUS DP (BP) and infrared (IR).

In case of repetitive supplies, it is possible to order separately the software packs DVD-E-SW-** and the communication interfaces E-C-PC-**.

The DVD-E-MAN-* documentation kits are available only for fieldbus options -BC and -BP and contains all necessary information and files to realize the communication between Atos electronics and fieldbus master units.

Programming software E-SW-**

This software is supplied on DVD format and it can be easily installed on a personal computer.

The graphic interface is user friendly and it is organized in pages related to different specific groups of functional parameters.

The graphic interface can adapt the displayed parameter groups thank to its multilevel access structure.

This programming software can be used to setting valves with or without transducers and with any interface version (PS, IR, BC or BP).

Features:

- automatic valve recognition
- multilevel graphic interface
- preset data storing
- internal DataBase management
- real time parameters modification
- numeric parameters settings (scale, bias, ramp, compensation of non-linearities, dither, etc.)
- diagnostic and monitor signals (fault, actual values)

5 MINIMUM SYSTEM REQUIREMENTS FOR E-SW-PS PROGRAMMING SOFTWARE

Personal computer	Pentium III
Operating system	Windows XP or Windows 2000
Monitor resolution	1024 x 768

Memory	128 MB RAM
Device	DVD
Interface	USB port, RS232 serial programming port (only for -PS-TERS)

6 KIT-E-SW CONTENTS

<p>KIT-E-SW-PS</p> <ul style="list-style-type: none"> • licence of use and recording form (S018-0) • E-C-PS-PC (pc-valve connecting cable, lenght 4 m) • DVD-E-SW-PS (DVD including: interface drivers, programming software E-SW-PS, user manuals, Atos website and catalog) • RS232-USB (PC) interface <p>KIT-E-SW-PS-TERS</p> <ul style="list-style-type: none"> • E-C-PS-PC (pc-valve connecting cable, lenght 4 m) • DVD-E-SW-PS-TERS (DVD including: interface drivers, light programming software E-SW-PS-TERS, user manual) <p>KIT-E-SW-PS-TERS/U</p> <ul style="list-style-type: none"> • E-C-PS-PC (pc-valve connecting cable, lenght 4 m) • DVD-E-SW-PS-TERS (DVD including: interface drivers, light programming software E-SW-PS-TERS, user manual) • RS232-USB (PC) interface <p>KIT-E-SW-BC</p> <ul style="list-style-type: none"> • licence of use and recording form (S018-0) • E-C-BC-PC (USB interface-valve connecting cable, lenght 2 m) • DVD-E-SW-BC (DVD including: interface drivers, programming software E-SW-BC, user and bus programming manuals, EDS files, Atos website and catalog) • CAN-USB (PC) interface <p>KIT-E-SW-BP</p> <ul style="list-style-type: none"> • licence of use and recording form (S018-0) • E-C-BP-PC (USB interface-valve connecting cable, lenght 2 m) • DVD-E-SW-BP (DVD including: interface drivers, programming software E-SW-BP, user and bus programming manuals, GSD files, Atos website and catalog) • PROFIBUS-USB (PC) interface <p>KIT-E-SW-IR (only for E-MI-AS-IR)</p> <ul style="list-style-type: none"> • licence of use and recording form (S018-0) • E-C-PC-IR-USB (USB interface-valve connecting cable, lenght 3 m) • DVD-E-SW-IR (DVD including: interface drivers, light programming software E-SW-IR, user programming manual, Atos website and catalog)
--

7 SOFTWARE PACK CONTENTS

<p>DVD-E-SW-PS</p> <ul style="list-style-type: none"> • licence of use and recording form (S018-0) • DVD (including: interface drivers, programming software E-SW-PS, user manuals, Atos website and catalog) <p>DVD-E-SW-PS-TERS</p> <ul style="list-style-type: none"> • DVD (including: interface drivers, light programming software E-SW-PS-TERS, user manual) <p>DVD-E-SW-BC</p> <ul style="list-style-type: none"> • licence of use and recording form (S018-0) • DVD (including: interface drivers, programming software E-SW-BC, user manuals, EDS files, Atos website and catalog) <p>DVD-E-SW-BP</p> <ul style="list-style-type: none"> • licence of use and recording form (S018-0) • DVD (including: interface drivers, programming software E-SW-BP, user manuals, GSD files, Atos website and catalog) <p>DVD-E-SW-IR</p> <ul style="list-style-type: none"> • licence of use and recording form (S018-0) • DVD (including: interface drivers, light programming software E-SW-IR, user programming manual, Atos website and catalog)
--

8 MANUAL CONTENTS

<p>DVD-E-MAN-BC</p> <ul style="list-style-type: none"> • CAN-bus programming manual • EDS configuration files <p>DVD-E-MAN-BP</p> <ul style="list-style-type: none"> • PROFIBUS DP programming manual • GSD configuration files <p>Note: standard fieldbus specifications not included</p>

9 COMMUNICATION INTERFACES CONTENTS

